

## Lexmark 622H cartuccia toner 1 pz Originale Nero

**Marchio :** Lexmark

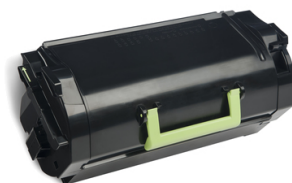
**Codice prodotto:** 62D2H0E

**Nome del prodotto :** 622H

25000p, Nero

Lexmark 622H. Resa in pagine del toner nero: 25000 pagine, Colori di stampa: Nero, Quantità per pacco:

1 pz



### Caratteristiche

Compatibilità *	Lexmark MX710/711/810/811/812
Quantità per pacco *	1 pz
Resa in pagine del toner nero	25000 pagine
Tipo *	Originale
Colori di stampa *	Nero
Durata materiale di stampa	2 anno/i
Colore del prodotto	Nero

### Condizioni ambientali

Intervallo temperatura di funzionamento	10 - 30 °C
---	------------

### Condizioni ambientali

Range di umidità di funzionamento	20 - 80%
Intervallo di temperatura	-20 - 40 °C
Umidità	10 - 90%

### Dati logistici

Codice del Sistema Armonizzato (SA)	84439990
-------------------------------------	----------

### Altre caratteristiche

A colori	✘
Tecnologia di stampa	Stampa laser
Produzione pagine note a piè di pagina	ISO/IEC 19752



0734646455664



734646455664

Disclaimer. The information published here (the "Information") is based on sources that can be considered reliable, typically the manufacturer, but this Information is provided "AS IS" and without guarantee of correctness or completeness. The Information is only indicative and can be changed at any time without notification. No rights can be based on the Information. Suppliers or aggregators of this Information do not accept any liability with regard to the content of (web)pages and other documents, including its Information. The publisher of the Information can not be held liable for the content of 3rd party websites that are linking this Information or are linked to from this Information. You as the User of the Information are solely responsible for the choice and usage of this Information. You are not entitled to transfer, copy or otherwise multiply or distribute the Information. You are obliged to follow the directions of the copyright owner(s) with regard to the use of the Information. Exclusively Dutch law is applicable. With regard to price and stock data on the site, the publisher followed a number of starting points, which are not necessarily relevant for your private or business circumstances. Therefore, the price and stock data are only indicative and are subject to changes. You are personally responsible for the way you use and apply this information. As a user of the Information or sites or documents in which this Information is included, you will adhere to standard fair use including avoidance of spamming, ripping, intellectual-property violations, privacy violations, and any other illegal activity.