

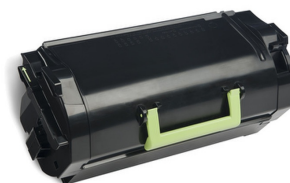
Lexmark 622X cartuccia toner 1 pz Originale Nero

Marchio : Lexmark

Codice prodotto: 62D2X0E

Nome del prodotto : 622X

622X Cartuccia di toner Return Program ad altissima resa
Lexmark 622X. Resa in pagine del toner nero: 45000 pagine, Colori di stampa: Nero, Quantità per pacco:
1 pz



Caratteristiche		Condizioni ambientali	
Compatibilità *	MX812dfe, MX812dpe, MX812dxfe, MX812dxpe, MX812dme, MX812dxme, MX811dfe, MX811dpe, MX811dme, MX811dxfe, MX811dxpe, MX811dxme, MX810dfe, MX810dpe, MX810dme, MX810dxfe, MX810dxpe, MX810dxme, MX711de, MX711dhe	Range di umidità di funzionamento	20 - 80%
		Intervallo di temperatura	-20 - 40 °C
		Umidità	10 - 90%
		Dimensioni e peso	
		Larghezza imballo	160 mm
		Profondità imballo	495 mm
		Altezza imballo	198 mm
		Peso dell'imballo	2 kg
		Tipo di imballo	Scatola
			Dati logistici
Quantità per pacco *	1 pz	Codice del Sistema Armonizzato (SA)	84439990
Tipo di cartuccia	Resa standard	Peso del pallet	183,9 kg
Resa in pagine del toner nero	45000 pagine	Altre caratteristiche	
Tipo *	Originale	A colori	✗
Colori di stampa *	Nero	Tecnologia di stampa	Stampa laser
Compatibilità marca *	Lexmark	Produzione pagine note a piè di pagina	ISO/IEC 19752
Durata materiale di stampa	2 anno/i		
Colore del prodotto	Nero		
Condizioni ambientali			
Intervallo temperatura di funzionamento	10 - 30 °C		



0734646455671



734646455671

Disclaimer. The information published here (the "Information") is based on sources that can be considered reliable, typically the manufacturer, but this Information is provided "AS IS" and without guarantee of correctness or completeness. The Information is only indicative and can be changed at any time without notification. No rights can be based on the Information. Suppliers or aggregators of this Information do not accept any liability with regard to the content of (web)pages and other documents, including its Information. The publisher of the Information can not be held liable for the content of 3rd party websites that are linking this Information or are linked to from this Information. You as the User of the Information are solely responsible for the choice and usage of this Information. You are not entitled to transfer, copy or otherwise multiply or distribute the Information. You are obliged to follow the directions of the copyright owner(s) with regard to the use of the Information. Exclusively Dutch law is applicable. With regard to price and stock data on the site, the publisher followed a number of starting points, which are not necessarily relevant for your private or business circumstances. Therefore, the price and stock data are only indicative and are subject to changes. You are personally responsible for the way you use and apply this information. As a user of the Information or sites or documents in which this Information is included, you will adhere to standard fair use including avoidance of spamming, ripping, intellectual-property violations, privacy violations, and any other illegal activity.

Publication date: 15-AUG-2023. Prints or copies of Information are only valid on the printed Publication date